

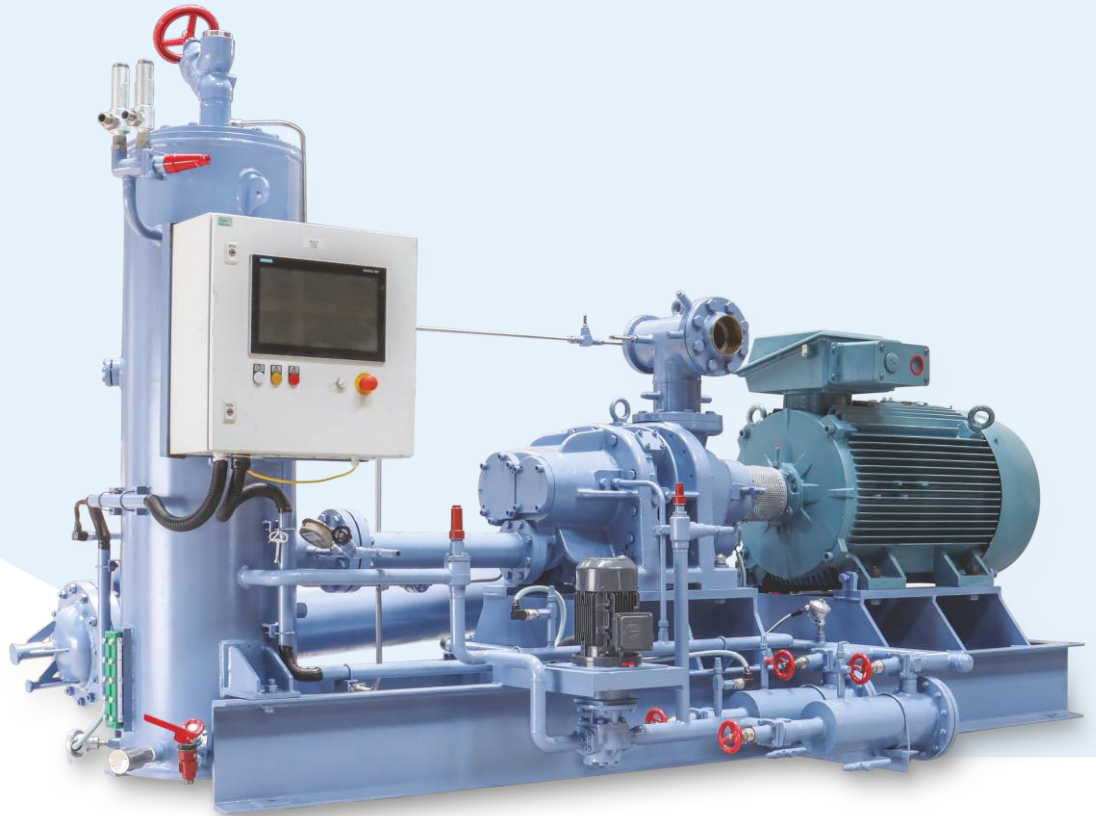
REFCON

Industrial Refrigeration, simplified.

GEA Engineering
for a better
world.

REFCON SCREW PACKAGE WITH GEA GRASSO COMPRESSOR

Plug and play solution for
industrial refrigeration systems



GEA Grasso screw compressor block for better efficiency!

- Screw Compressors can run up to 3600 RPM with VFDs.
- Whether it's food, beverage, chemical or pharma industry, Refcon has the most energy efficient solution for your refrigeration needs.
- We offer screw compressor packages with GEA Grasso screw compressor block. Refcon screw compressor packages are complete with oil separator, oil filters, oil pumps and oil cooler. Our three-stage oil separators are specially designed for ensuring minimum oil throw.



Product highlights of Screw compressor package

- Classic design: Efficient, reliable and flexible
- Capacity up to 9 MW
- **Compressor performance data according to European standard EN12900 and DIN 8976**
- Axial bearing change without dismounting
- Easy servicing and low operating costs ensuring reduced total cost of ownership
- Duplex type oil filters so as to minimise the downtimes
- GEA Grasso compressors are well respected in the industrial refrigeration industry
- Vibration and noise dampening
- 10-100% step-less capacity control
- Best part load efficiency
- State of art GEA Omni™ control panel
- Oil coolers available in both options i.e. refrigerant cooled and liquid cooled

Industries we serve



Food and Beverage processing



Chemical and pharma



Seafood processing



Cold chain



Dairies

Technical data

Refcon Screw compressor packages with GEA Grasso M

Model	Motor Speed (rpm)	Cooling capacity (rW)		
		R717 -10/+35°C	R717 -40/-10°C	R290 -10/+35°C
GEA Grasso M-C	4,500	219	68	181
GEA Grasso M-D	4,500	262	81	217
GEA Grasso M-E	4,500	313	96	259
GEA Grasso M-G	4,500	372	111	308
GEA Grasso M-H	4,500	471	147	389
GEA Grasso M-L	4,500	544	169	449
GEA Grasso M-M	4,500	715	222	590
GEA Grasso M-N	4,500	879	274	725

Refcon Screw compressor packages with GEA Grasso LT

Model	Motor Speed (rpm)	Cooling capacity ¹⁾ (rW)		
		R717 -10/+35°C	R717 -40/-10°C	R290 -10/+35°C
GEA Grasso SP1-P	3,600	646	197	507
GEA Grasso SP1-R	3,600 4,500	835 1,064	255 318	655 835
GEA Grasso SP1-S	3,600 4,500	1,056 1,320	322 403	829 1,036
GEA Grasso SP1-T	3,600 4,500	1,183 1,479	361 451	929 1,161
GEA Grasso SP1-V	3,600	1,388	428	1,091
GEA Grasso SP1-W	3,600	1,619	499	1,273
GEA Grasso SP1-Y	3,600	1,964	606	1,549
GEA Grasso SP1-Z	3,600	2,282	703	1,795
GEA Grasso SP1-XA	3,600	2,699	832	2,122
GEA Grasso SP1-XB	3,600	3,415	1,028	2,685
GEA Grasso SP1-XC	3,600	4,029	1,242	3,168
GEA Grasso SP1-XD	3,600	4,768	1,470	3,749
GEA Grasso SP1-XE	3,600	5,891	1,816	4,633
GEA Grasso SP1-XF	3,600	7,034	2,168	5,531
GEA Grasso SP1-XG	3,600	8,058	2,502	6,337
GEA Grasso SP1-XH	3,600	9,423	2,926	7,410

Other offerings



UMA Evaporative condenser



Skid mounted refrigeration units



ISO 9001:2015 COMPANY

REFCON Engineering Services Pvt Ltd.

www.refconengg.com

Corporate Office:

Office No. 310-311, The Pentagon Building,
Behind Lotus Court, Parvati, Pune 411009, India.
Ph: 020 - 24213276 / 24217584
Email: refconengg@gmail.com

Factory:

Plot No. I-3B, Integrated Industrial Area,
Chordia Industrial Park, Central Sangvi,
Khandala, Satara 412801, India.